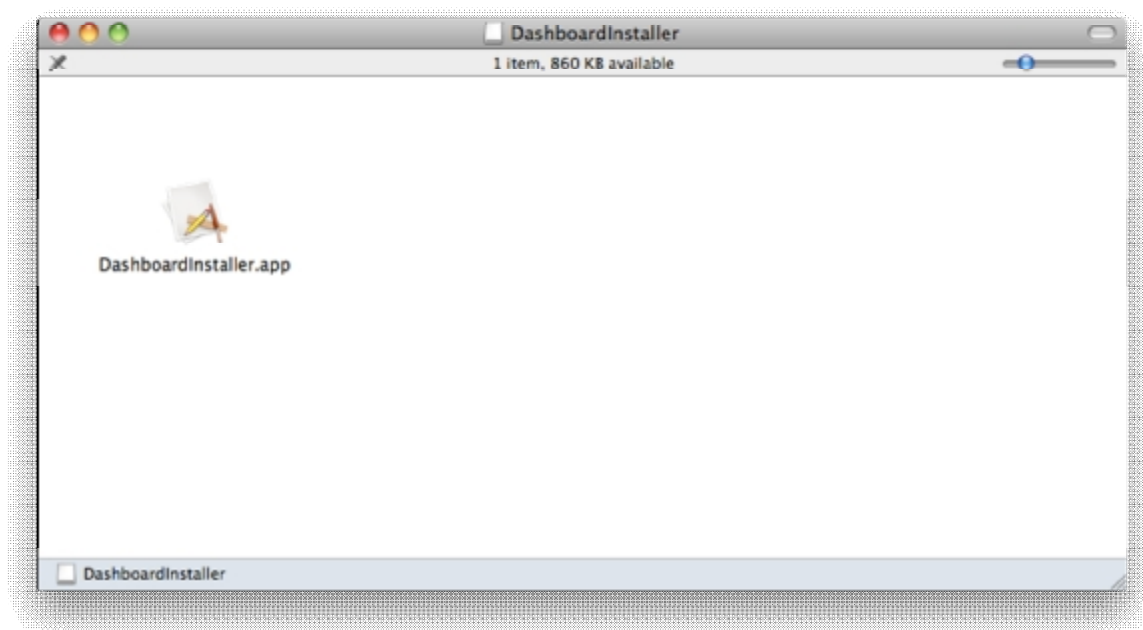
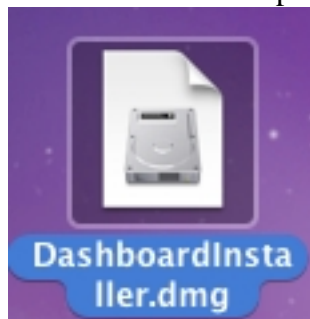


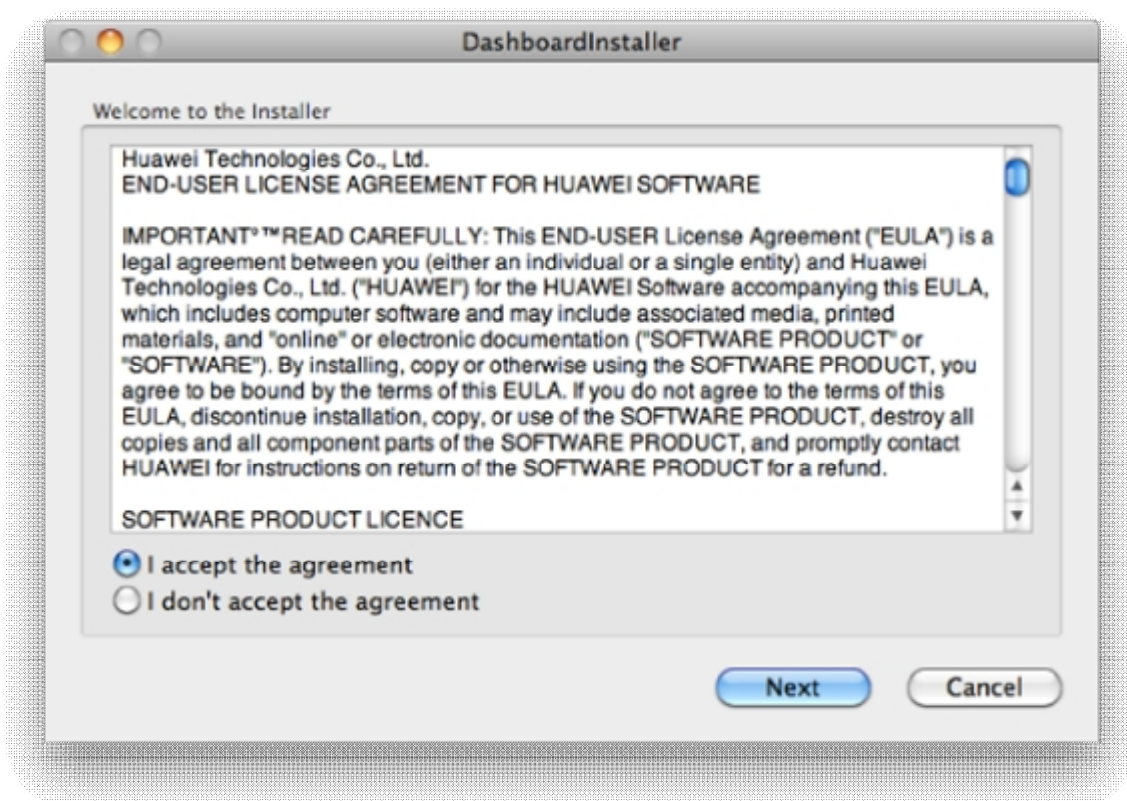


DashboardInstaller is used to help users to install HUAWEI dashboard on Mac OS X 10.6.  
Make sure data card has been connected with computer.  
The following steps show how to use the DashboardInstaller to install.

1. Double click to open DashboardInstaller.dmg file.

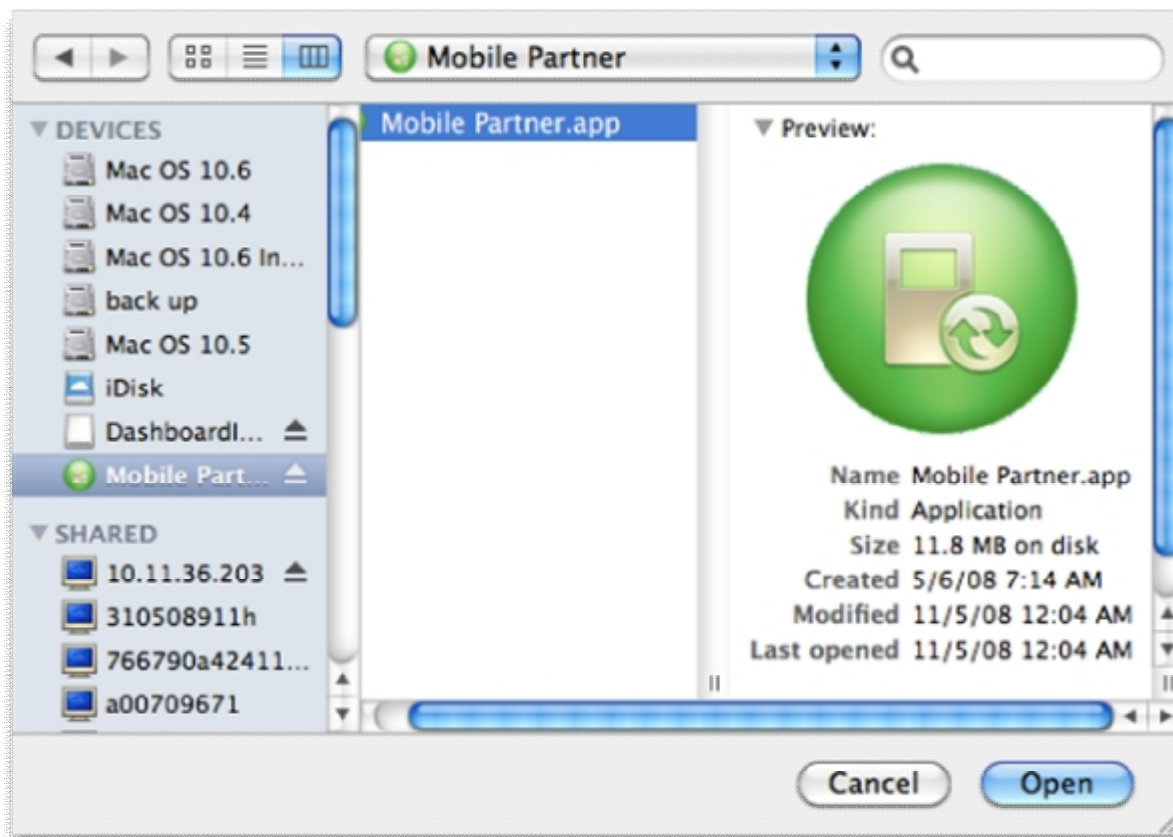


2. Choose "I accept the agreement" and click next to continue installation.

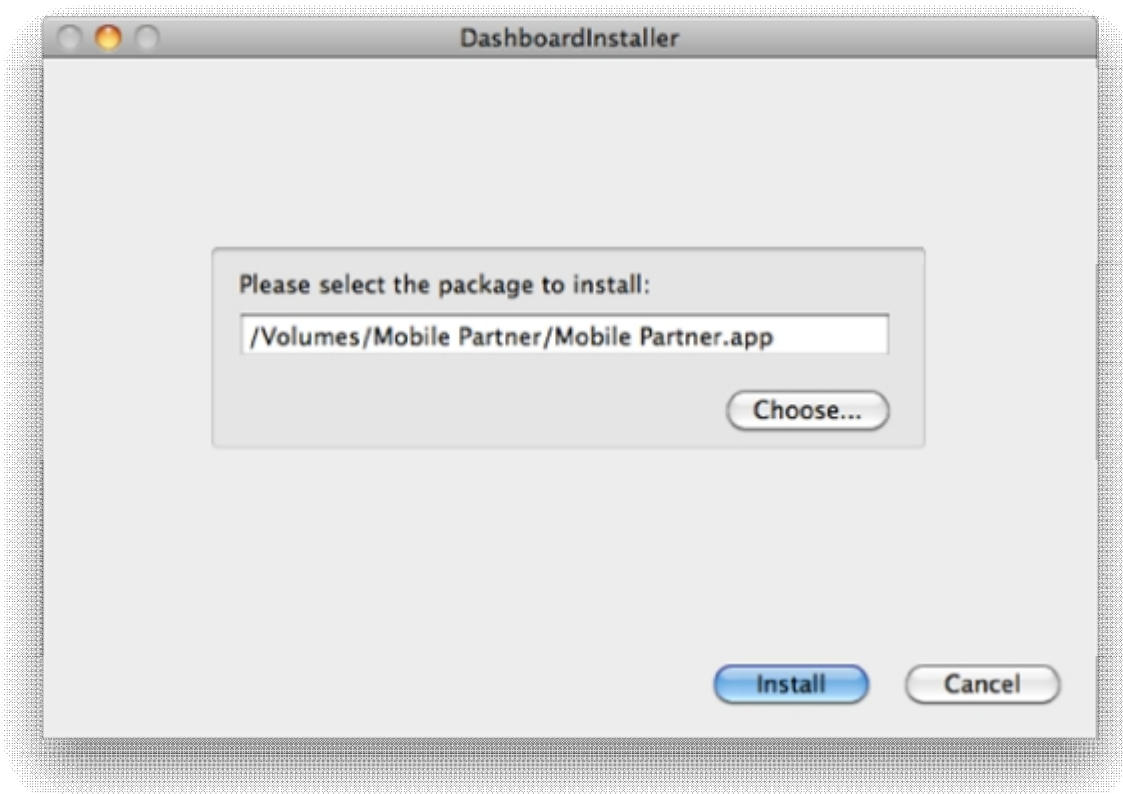


3. Click choose button to choose the package to install. Make sure data card has been connected with computer. The package is locate at /Volumes as CD. After found it, click open to select it.





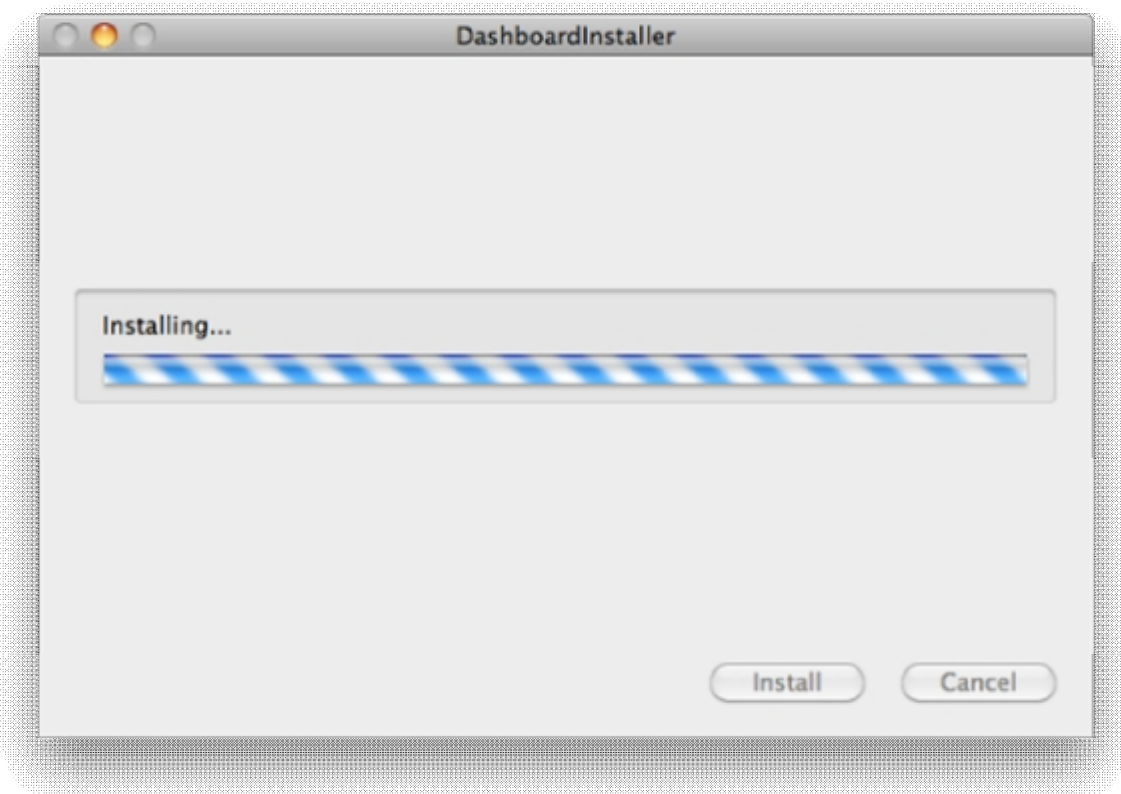
4. Click install to continue installation.



5. Please input administrator password to continue installation.



6. Installing. It takes about ten seconds.



7. Complete to install. Click finish to quit installer and start dashboard application.

